

## Longtom-4\_RT\_500MD Log

**Format: V825 RT Log 500MD**

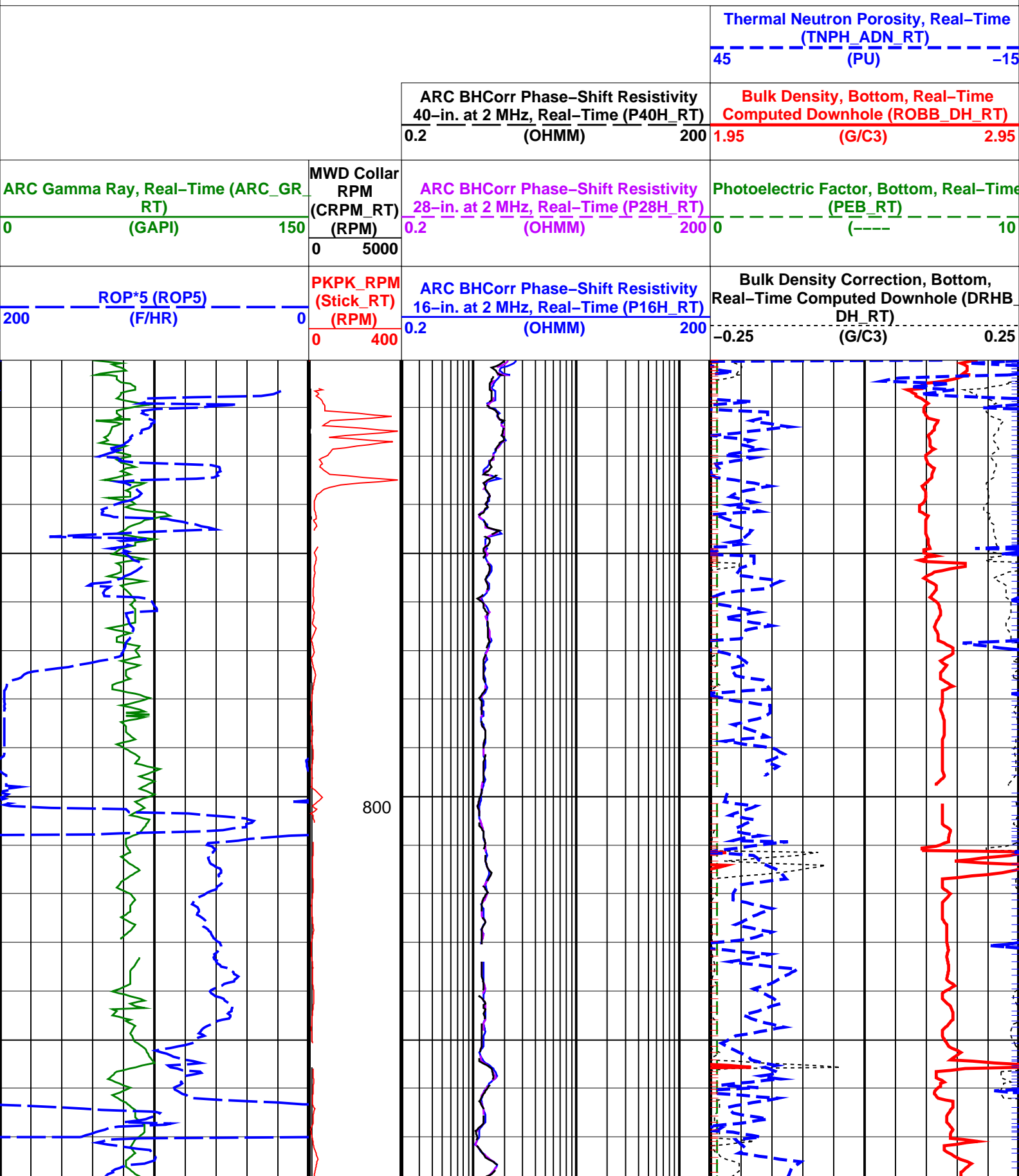
**Vertical Scale: 1:500**

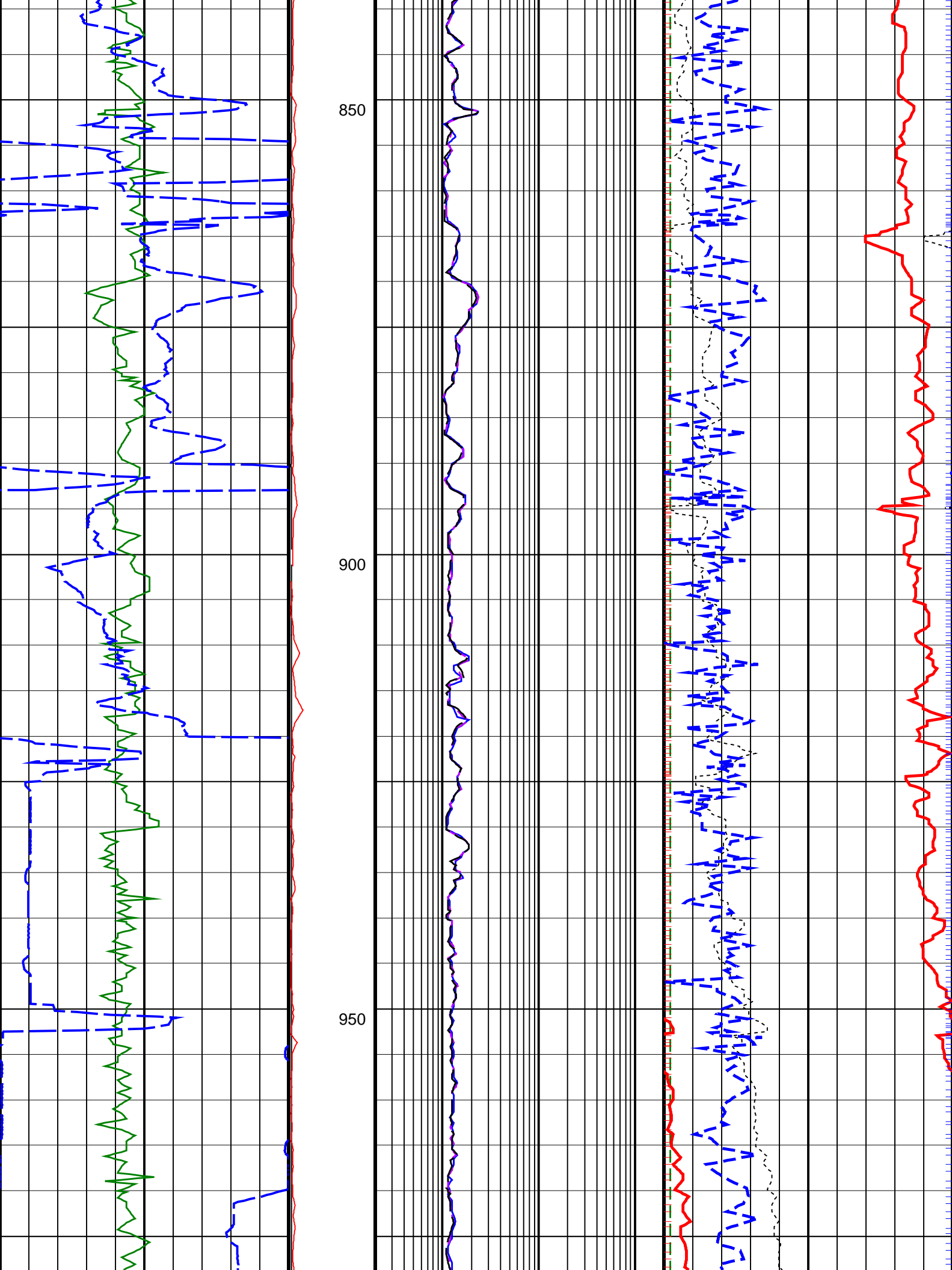
**Graphics File Created: 01-Jul-2008 04:58**

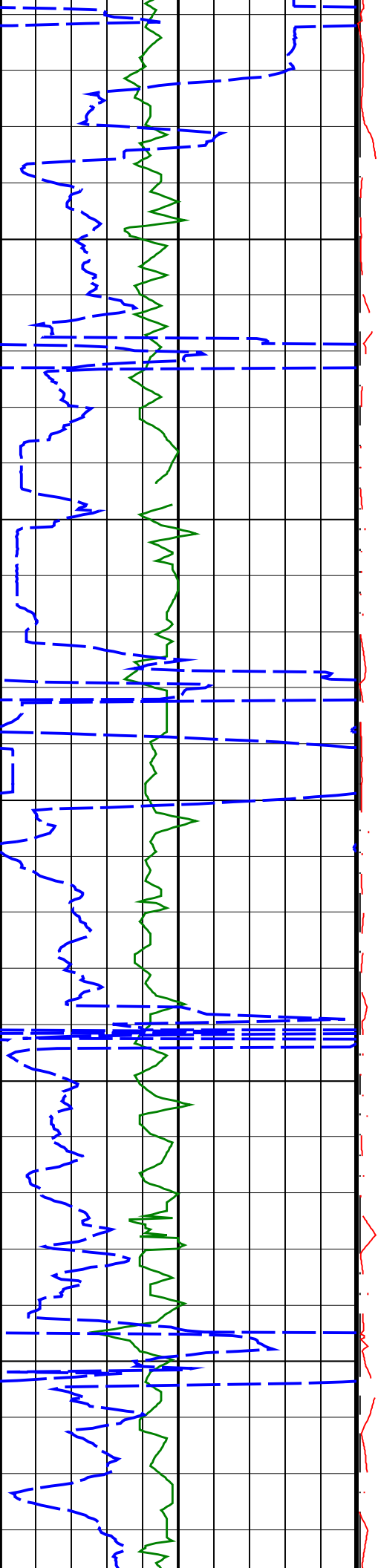
## PIP SUMMARY

## Density Samples └

## Neutron Samples



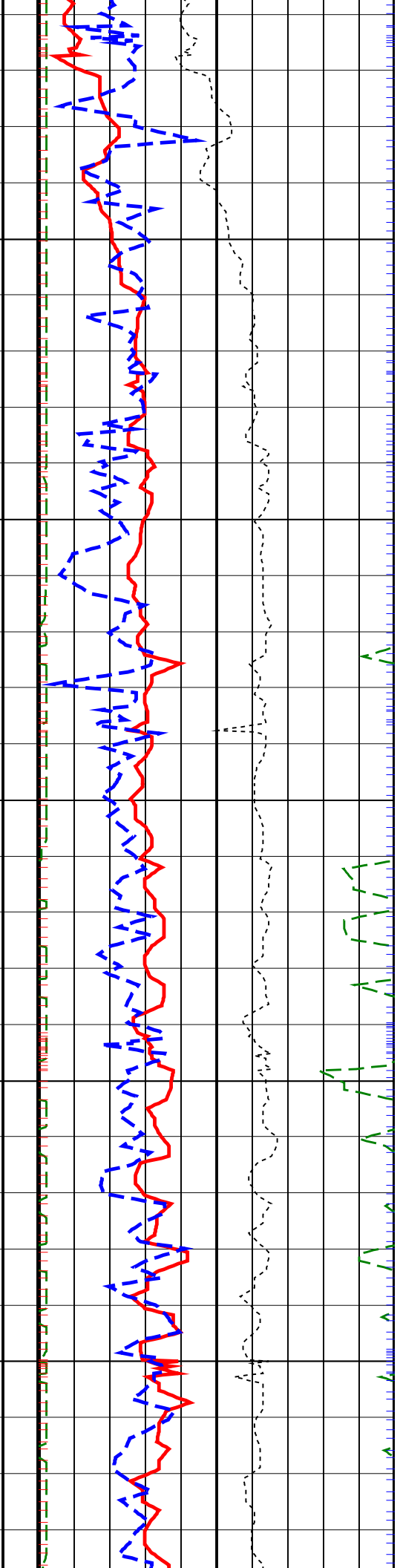
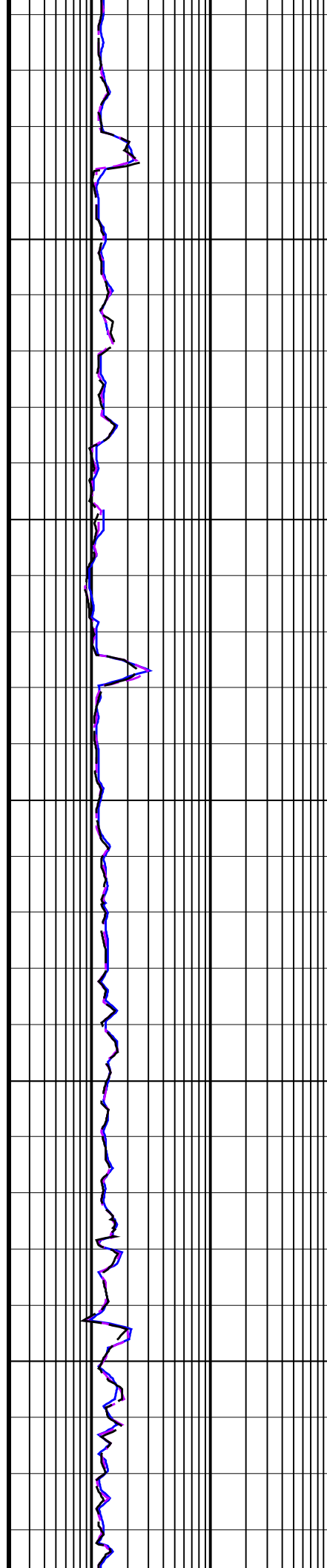


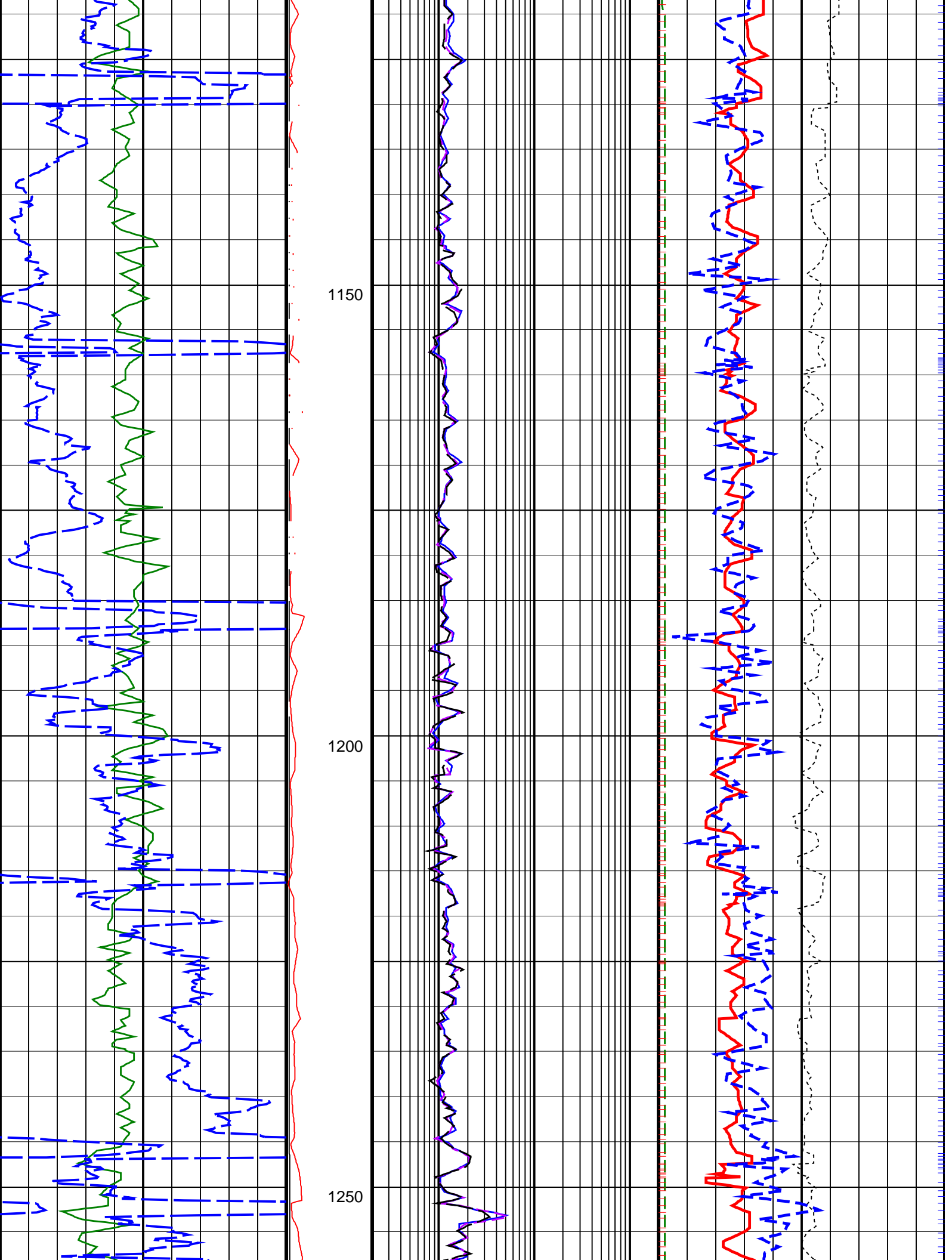


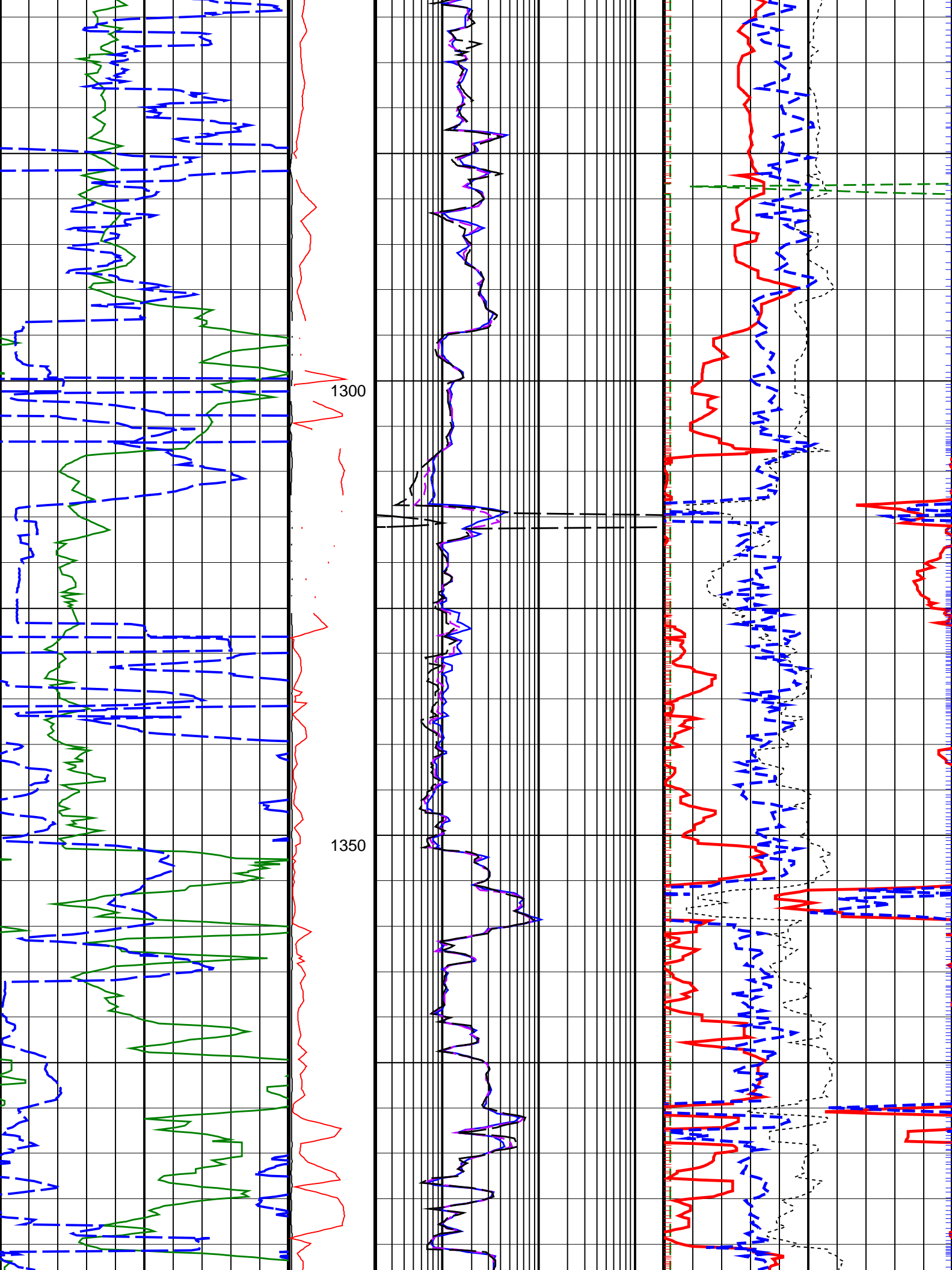
1000

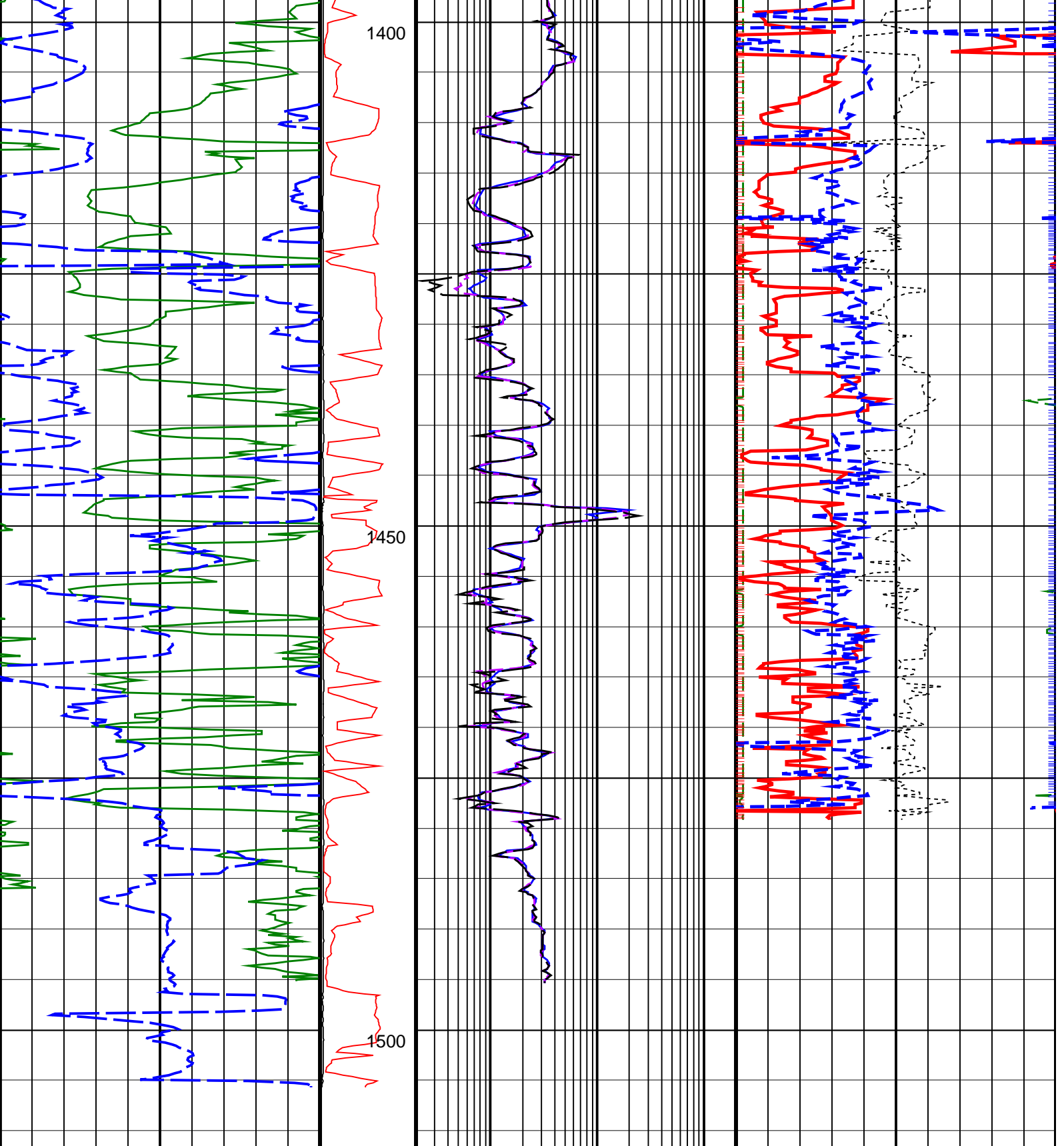
1050

1100









<div>ROP*5 (ROP5) (F/HR)</div> <div>2000</div> <div>0</div>	<div>PKPK_RPM (Stick_RT) (RPM)</div> <div>0</div> <div>400</div>	<div>ARC BHCORR Phase-Shift Resistivity 16-in. at 2 MHz, Real-Time (P16H_RT) (OHMM)</div> <div>0.2</div> <div>200</div>	<div>Bulk Density Correction, Bottom, Real-Time Computed Downhole (DRHB_ DH_RT) (G/C3)</div> <div>-0.25</div> <div>0.25</div>
<div>ARC Gamma Ray, Real-Time (ARC_GR_ RT) (GAPI)</div> <div>0</div> <div>150</div>	<div>MWD Collar RPM (CRPM_RT) (RPM)</div> <div>0</div> <div>5000</div>	<div>ARC BHCORR Phase-Shift Resistivity 28-in. at 2 MHz, Real-Time (P28H_RT) (OHMM)</div> <div>0.2</div> <div>200</div>	<div>Photoelectric Factor, Bottom, Real-Time (PEB_RT) (----)</div> <div>0</div> <div>10</div>
		<div>ARC BHCORR Phase-Shift Resistivity 40-in. at 2 MHz, Real-Time (P40H_RT) (OHMM)</div> <div>0.2</div> <div>200</div>	<div>Bulk Density, Bottom, Real-Time Computed Downhole (ROBB_DH_RT) (G/C3)</div> <div>1.95</div> <div>2.05</div>

0.2	(OHMM)	200	1.95	(G/C3)	2.95
			Thermal Neutron Porosity, Real-Time (TNPH_ADN_RT)		
			45	(PU)	-15
<p style="text-align: center;">PIP SUMMARY</p> <p style="text-align: right;">Density Samples <span style="color: red;">+</span></p> <p style="text-align: right;">Neutron Samples <span style="color: blue;">+</span></p>					
<p><b>IDEAL Version: ID13_0C_08</b></p> <p>IDF</p>					